



# Beekeeping News

www.pugetsoundbees.org

Inside this issue:

Almanac	2
The Hive Corner	2
President's Message	3
PSBA's 50th!	3
Ads	4
Tip of the Month	4
Virtual Beekeeping	4
Book Watch	4
PSBA Officers	4

## PSBA Announcements and Upcoming Events

### ANNOUNCEMENTS

#### **Volunteers Needed**

JOIN a work party. Call the work party organizer listed in the Hive Corner on page 2 and let them know of your interest and time availability. This is a great opportunity for new beekeepers to work along side of an expert.

issue. Thanks to Scott Eby, treasurer, and Bruce Eckholm, registration form designer, for their excellent work!

#### **Newsletter Contest**

PSBA entered the Bee Culture Newsletter contest and lost ;(. We have not received any score cards or feedback yet, but will keep you informed when we do.

sent the keynote speech, as well as perform hive examinations in the club apiary. This event consistently gets rave reviews.

Contact Information:

John de Groot:  
eMail: john\_degroot@juno.com  
Phone: (425) 788-2259

#### **Western Apicultural Society 2002 Annual Conference**

August 12—15, 2002  
Tahoe Biltmore Hotel/Casino. (800) 245-8667. Use Group Number 0812 when making hotel reservation. Deadline: July 12, 2002. This conference is worth getting to. See Supplement to Sept. 2001 PSBA Newsletter for a summary of last year's WAS 2001 Convention.

Contact Information:

Eric Mussen:  
eMail: ecmussen@ucdavis.edu  
Phone: (530) 752-0472

### EVENTS

#### **Beetopia**

Beetopia is our annual 'field day' at the Arboretum's Visitor Center. This program is intended to train new beekeepers how better to care for their hives. The program will be conducted on Saturday, May 18, 2002. Admission is \$15 per household, or \$5 per student. We will discuss and demonstrate hive manipulation, swarm prevention, disease prevention, disease treatment, and hive examination techniques. Former Washington State Apiarist Jim Bach will pre-

#### **PSBA 50th Anniversary**

2002 marks the 50th anniversary of the PSBA! Plans are underway for celebrations later this year. Bill Rahr will be our guest writer for a special Newsletter series.

#### **PSBA Website**

The PSBA Forum area of our website is back up and running. Use this area to post your question about beekeeping, share an insight, tell a story or check out the good advice and interesting thoughts previously posted <http://pub5.bravenet.com/forum/show.php?usernum=411580919>

You will find **PSBA Year 2002 Membership List** in this month's

#### PSBA APRIL MEETING

##### **At the UW Arboretum's Graham Visitor Center**

2200 Arboretum Drive E. Seattle  
*Meetings are regularly scheduled on the 4<sup>th</sup> Tuesday of each month except July and December.*

##### **April 23, 2002**

##### **Beginner's Session 6:30—7:00 pm**

Basic Beekeeping 101: Bees in the Hive, and Equipment: How to get your hive off to a good start.  
Presented by: Van Sherod

##### **Main Program**

##### **7:15—9:00 pm**

The World of Observation Hives: Getting the Inside Scoop.  
Presented by: Frank Fitzpatrick

If you have an observation hive, plans or opinions, please bring them to the meeting.

**Next Trustee Meeting:** Wed.  
May 1, 2002 7:00 pm to 9:00 pm. At the Graham Visitor Center.

## Almanac for Puget Sound Beekeepers

### *Adapted from Roy Thurber Bee Chats, Tips and Gadgets*

#### MONTH of MAY

*Blackberries blossom starting about the 4th week in May to the 1st week in June. Fireweed about a week later in the lowlands.*

Requeen in the early part of May if not done in April. Carry out your favorite swarm prevention protocols. Give the bees plenty of brood box room (3 deeps is the current recommendation) both for queen egg laying and for the hive to collect extra spring honey that you can save for next winter's emergency feeding.

Examine drawn comb in

supers for moth damage and replace as needed. Have about 3 or 4 Western supers with 9 frame spacers ready for each hive. Do not use comb that has previously been used for brood rearing as the wax may have absorbed medications used for disease control and these medications could potentially get into your honey for human consumption. Remove all medications from the hive before adding honey supers.

Add an additional super when the top super has 6 to 7 frames of honey in it or if the bees are clustered on

the entrance at night.

If you use queen excluders, be sure the queen is in the hive body below the excluder. The excluder can be placed any time from placing the first super up until 2 to 3 weeks before the expected extracting date to allow enough time for any brood in the supers to emerge. Some beekeepers like to have entrances above the excluder so that bees do not have to go through the excluder to get into the super. Other beekeepers don't use excluders at all.

Be prepared. Blackberry and fireweed flows are fast.



“Be prepared. Blackberry and fireweed flows are fast.”

#### The Hive Corner

##### **PSBA Apiary Update**

By: John de Groot

*PSBA Apiary is currently located at the U. of W. Arboretum, just south of the main greenhouses.*

#### **2002 Apiary Manager:**

**Gene Bowley** 206-324-0759  
eMail: genebowley@yahoo.com

The club hives were examined on Saturday March 30, thanks to John deGroot, work party organizer and volunteers: Ann Patton, Norman Smith, and Rob Stevens.

All hives were dead. There was plenty of honey directly adjacent to the remains of the clusters, so none had starved. There was no odor or sign of foulbrood nor of nosema. Distinct, small clusters were found in some but not all hives. This suggests that they dwindled due to varroa or tracheal mites. Jeannie Basset of Beez Neez reports that Apistan-resistant varroa are showing up in the local area, so mite strips might be ineffective. Take heed everyone, this can happen to you.

The supers stored in the club's shed were used as a nest by a rat during the winter. Ugh! There are a bunch of wax moth larvae in the

shed in spite of the paradichlorobenzene crystals on the stacks of supers. The damage is not severe yet. We saw lots of live wax moth larvae, especially outside the stacks of supers. The stacks of supers had been treated but the horizontal cracks between supers in the stacks were not taped. For best effectiveness the joints between supers should be sealed with masking or duct tape. This keeps the paradichlorobenzene vapor inside the stack.

Ann, Norman, and Ray did a terrific job on the dead-outs, rat nest, and wax moth infestation, but we had more mess than time. Additional work parties will be necessary.

#### **Upcoming Apiary Activities:**

Six packages with marked queens are on order, and should arrive between April

17 and 22. Stay tuned for late-breaking developments.

#### **Apiary Coverage Schedule**

##### **Apr 15—30**

Dawn Corl  
Phone: (206) 525-2433  
eMail: dawncorl@blarg.net

##### **May 1 -15**

Tim Celeski  
Phone: (206) 932-4466  
eMail: beekeeping@attbi.com

##### **May 16—31**

Paula Milligan  
(206) 440-0791  
eMail: ryderclan@yahoo.com

##### **June 1—15**

Bruce Eckholm  
Phone: (206) 788-0255  
eMail: eckholm@phinneybee.com

##### **Jun 16 - 30**

Scott Eby  
Phone: (425) 486-4290  
eMail: scott.eby@physio-control.com

##### **Jul 1—15**

John Keenan  
Phone: (206) 297-1789  
eMail: maevesvole@aol.com

## President's Message John deGroot, PSBA President

Some new members might not be familiar with all the club's services and programs. If you wish to get your money's worth from your dues, read on.

**Field Day:** Starting at 9:30 am on Saturday May 18 this year, an all-day practical teaching exercise will be held, so come and bring your bee suit. As in previous years our expert, lecturer, and demonstrator of hive manipulation and examination will be Jim Bach. This is always a superb educational experience.

**Subscriptions:** Subscribe to beekeeping magazines through the club and get a reduced

price on lots of useful, current information.

**Newsletter:** There is no finer club newsletter anywhere. Members are welcome to contribute an article from time to time.

**Mentoring:** The club maintains a list of potential mentors on our web site and attempts to facilitate mentor relationships. Keep in mind that the ultimate beneficiary and the one responsible for creating mentoring relationships is the same person.

**Work Parties:** The best way to gain experience, get your questions answered, and get one-on-one guidance is to join a work-party at the club's

apiary. The club has a few bee suits in the equipment shed for loan to those who have not yet bought their own.

**Swarm List:** If you wish to catch swarms, ask Frank Fitzpatrick to put your name on the Swarm List. This is a truly interesting experience.

**Migration to the Mountains:** Each July and August Frank Fitzpatrick helps club members move their hives into the Cascade foothills for the Fireweed nectar flow. The permits, site finding, and bear fencing are provided. To learn how, you need only bring your hives and share in the work.



*"[Cap Moen] was the spark plug for the club. . . [and] he alone got the Arboretum's OK to place the first [PSBA] beehives in this wonderful location."*

## Puget Sound Beekeepers Association – 50 Years! By: Bill Rahr

This year marks our fiftieth anniversary. I was asked by our Editor, Dawn Corl, if I would be willing to write or solicit articles from other old timers about some of the early memories of the club and beekeeping fifty years ago. My first thought was "Holy Cow – most of these guys are dead!" And further, I know of only two that are still kicking but have severe mental impairments (doesn't speak well for us older fellows, does it). Anyway, we decided to forge ahead with this 'Mission Impossible' project.

The fifty's and sixty's

had one old timer, now extinct, named simply "Cap Moen". That's about the only name that he went by. Bob Clark and I remember him well. He was the spark plug for the club and his enthusiasm for beekeeping was catching. Somehow he managed to get the Seattle newspapers to do neat articles on his hobby, like photos of him showing school kids a frame of bees during a demonstration or retrieving a swarm of bees from little old lady's Rhododendron. In between he was kind of a growly old geezer (most of us get that way in later years due to decades of

accumulated stress) but always willing to help. My reason for singling out Cap Moen is that he alone got the Arboretum's OK to place the first beehives in this wonderful location. He was one of the memorable characters that kept the then new PSBA club going, but most importantly, much of his beekeeping activities were chronicled by articles and write-ups, thus promoting beekeeping all over the Puget Sound area. I'm sure that I can put together an article for next month from this archival material. Look for it!

## PSBA OFFICERS

### President

John de Groot  
Phone: (425) 788-2259  
eMail: john\_degroot@juno.com

### Vice President

Nancy Beckett  
(206) 937-5583  
eMail: nbeckett@gte.net

### Secretary

Paula Milligan  
(206) 440-0791  
eMail: ryderclan@yahoo.com

### Treasurer

Scott Eby  
(425) 486-4290  
eMail: scott.eby@physio-control.com

### Newsletter Editors

Dawn Corl  
Phone: (206) 525-2433  
eMail: dawncorl@blarg.net

Bruce Eckholm

Phone: (206) 788-0255  
eMail: eckholm@phinneybee.com

### 2002 Apiary Manager

Gene Bowley  
Phone: 206-324-0759  
eMail: genebowley@yahoo.com

### TRUSTEES

Bob Clark, Vic Scarpelli, Kate  
McWiggins, Jennifer Cochrane, Gene  
Bowley, Frank Fitzpatrick, Tim  
Celeski, John Keenan

## Tip of the Month

### Gorging method of administering Fumidil-B:

If your bees have stained the front of the hive with diarrhea, have swollen abdomens and are crawling in front of the hive, they may have nosema, a spore-forming protozoan that effects the midgut of the bee and is spread by drifting bees and by beekeeper manipulations. It is fairly common in places where spring is cold and wet and, like high blood pressure in humans, can be latent for years it becomes symptomatic.

WSDA recommends mixing 1 rounded tsp. of Fumidil-B in

warm water with a small amount of granulated sugar and stir until dissolved, Add to one gallon of 1:1 sugar syrup and feed the colony. If they are not taking the syrup, you can use the gorging method. If day time temps are >60°F, pour about 2-6 cups of the syrup right over the top bars, getting as many bees wet as possible but without having syrup drain out the front of the hive. Repeat 3 times every 7-10 days.

## Virtual Beekeeping

**BeeSource.com** Here is web site for downloading plans for a 5-frame Nuc, a 3-frame Observation Hive and much more. [http://www.beesource.com/plans/usda\\_nuc.htm](http://www.beesource.com/plans/usda_nuc.htm) and <http://www.beesource.com/plans/obsrhive.htm>

## Book Watch

### The Wisdom of the Hive: the Social Physiology of Honey Bee Colonies

By: Thomas D. Seeley

This book sets out to answer the question of how a colony of bees is organized to gather its resources. The research is multifaceted and is explained in scientific detail. The author compares honey bee biology to other living organizations: multicellular organisms, colonies of marine invertebrates and human societies. It all boils down to cooperation and coordination of tasks among many members with a common interest. This is a fascinating, accessible book that will increase your appreciation of both science and bees.

## Puget Sound Beekeepers Association

### PSBA Newsletter Editor

c/o Dawn Corl  
6226 34<sup>th</sup> Ave. NE  
Seattle, WA 98115

### FREE Service for PSBA Members !

Sarah Cooke will sample your bees for tracheal mites. (206) 368-5430

**HIVES:** Several 2-deep hives for sale. Medicated in Fall for mites.

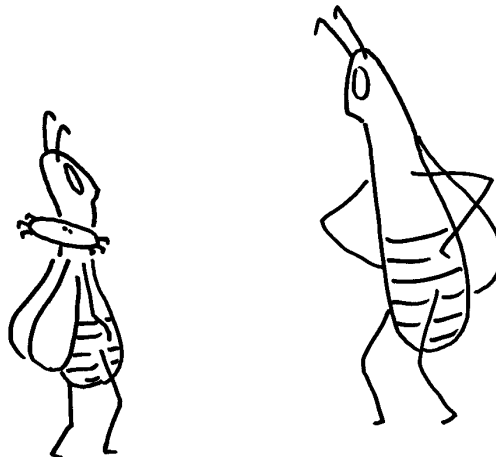
Call Don Mech: (425) 432-3971

**SLUMGUM RENDERING:** Will render your slumgum for 1/2 of the resulting wax.

Call Frank: (206) 244-1291.

Short ads are run for free for members of PSBA! Commercial ad rates: \$15 for 1/4 page, \$30 for 1/2 page, or \$60 for a full page. Deadline for entry is first of the month.

b  
i  
z  
z  
z  
y



MOM... DO WE HAVE ANY APISTAN?

JM

by Jerry Mixon