



Beekeeping News

www.pugetsoundbees.org

PSBA Announcements

Inside this issue:

Almanac	2
The Hive Corner	2
In the News	3
Upcoming Events	3
Ads	4
Tip of the Month	4
Virtual Beekeeping	4
Book Watch	4
PSBA Officers	4

PSBA MARCH MEETING

At the UW Arboretum's Graham Visitor Center

2200 Arboretum Drive E. Seattle
Meetings are regularly scheduled on the 4th Tuesday of each month except July and December.

March 26, 2002

Beginner's Session

6:30 p.m.—7:00 pm

Basic Beekeeping 101: Bees in the Hive, and Equipment

Presented by: Van Sherod

Main Program

7:15—9:00 pm

Sex and the Swarming Queen

Presented by: Scott Eby, Evan Sugden, John de Groot, Frank Fitzpatrick

Next Trustee Meeting: Wed.

May 1, 2002 7:00 pm to 9:00 pm. At the Graham Visitor Center.

PSBA Election Results

Annual elections were held at the February meeting. Results are as follows:

President: John de Groot
Vice-president: Nancy Beckett
Secretary: Paula Milligan
Trustee: Gene Bowley
Trustee: Frank Fitzpatrick
Trustee: John Keenan

There are still 2 open Trustee positions. If you are interested in serving, please contact John de Groot.

PSBA 50th Anniversary

2002 marks the 50th anniversary of the PSBA! Plans are underway for celebrations later this year. Watch this space for more information as it becomes available.

Package Bee Pick-up

A road trip is in the works to pick up and deliver package bees from Heitkam's Honey Bees in California. Packages will be delivered to Tukwila in early April. The deadline for ordering is March 20, payment by check is due

March 30. Please specify marked/unmarked queens, Italians or Carniolans. Prices and specific pick-up location details will be available from Tim Celeski.

Contact Information:

Tim Celeski:
eMail*: beekkeeping@attbi.com
Phone: (206) 932-3838
* preferred

Swarm List

Each year the PSBA provides local authorities with a list of beekeepers willing to collect swarms of honey bees at no charge. The beekeeper keeps the bees and the public is always most appreciative. THIS IS A FREE SERVICE PROVIDED BY PSBA AS A PUBLIC SERVICE! If someone insists on paying you to take away the bees, submit the money as a donation to PSBA. If you would like to volunteer to chase swarms this year, please submit your name, address, and preferred geographic area to:

Frank Fitzpatrick
18541 Marine View Dr SW
Normandy Park, WA 98166
Phone: (206) 244-1291
eMail: DieBiene@juno.com

PSBA Website

The PSBA Forum area of our website is currently down as an authorized system breach was detected on March 2. Access has been temporarily disabled until our service provider is certain that the network did not harbor any malicious files or corrupt data.

Dues are Overdue!

If you have not yet paid your PSBA dues, please wait no longer. Scott Eby will be printing the Year 2002 membership list this month. If you want to be on the list, the absolute last final deadline is the March 26th meeting.

Almanac for Puget Sound Beekeepers

Adapted from Roy Thurber Bee Chats, Tips and Gadgets

MONTH of APRIL

Maple trees blossom the first week of April.

Check to see if you have eggs indicating a laying queen. On a 55 degree day with no wind, a frame can be examined for no more than 10 seconds without chilling the brood. Clean the floor boards. Bees should now be flying

freely and carrying in quantities of pollen. Colonies that require feeding should be given syrup made with equal parts sugar and water. Starvation is most common in late Spring. Do not expose syrup to foraging bees outside the hive. Use top feeders. Feed Fumidil-B to control *Nosema*. Feed Terramycin before bees

start collecting maple nectar if you plan to harvest honey from this flow. Check for Varroa mite load and treat if indicated.

Re-queen about the last week of April or the first week of May. Reverse the 2 lower hive bodies as the cherry blossoms show color, making sure that the queen is in the lower box.



On a 55 degree day with no wind, a frame can be examined for no more than 10 seconds without chilling the brood.

The Hive Corner

PSBA Apiary Update

The PSBA apiary is located at the UW Arboretum, just south of the main greenhouses. We currently operate four active colonies. The club apiary provides an opportunity for members of all experience levels to work together and hone their skills and share their knowledge in the beeyard. Proceeds of the honey from the apiary goes to fund our rental fees for use of the Graham Visitor center.

Apiary Coverage Schedule

Officers and trustees have agreed again this year to oversee work in the apiary. The schedule is as follows:

Apr 5 - 18

John de Groot
Phone: (425)788-2259
eMail: john_degroot@juno.com

Apr 19 - May 2

Dawn Corl
Phone: (206) 525-2433
eMail: dawncorl@blarg.net

May 3 - May 16

Tim Celeski
Phone: (206) 932-4466
eMail: beekeeping@attbi.com

Jun 21 - Jul 4

Scott Eby
Phone: (425) 486-4290
eMail: scott.eby@physio-control.com

Jul 5 - Jul 18

John Keenan
Phone: (206) 297-1789
eMail: maevesvole@aol.com

We still need coverage for May 17—Jun 21, and from Jul 19 - Oct 1. If you are willing to oversee apiary activities for any portion of this time frame, please contact John de Groot. At (425) 788-2259.

Upcoming Apiary Activities

In early April we will be doing moving the bees out of the apiary to do repairs. Prior to our April 23rd meeting, we need lots of people, crowbars, and strong backs to help re-orient the concrete foundations that the hives sit on. Those of you interested in helping out should arrive at 6PM at the apiary. We welcome any new volunteers for this project, too.

Gene Bowley is making progress on the informational

kiosks in the apiary. Look for these later this year.

Volunteers Needed

Every year the club needs volunteers to help maintain the apiary, and this year is no exception.

Currently, the Apiary Manager position is still unfilled. Not much experience with bees is needed—just a good attitude and a willingness to organize work parties.

Spend a few hours working alongside your fellow club members inspecting for disease, implementing swarm control measures, and supering / harvesting. This is a great opportunity both to teach others and to learn from them. If you're willing to help out, please contact the person overseeing the apiary for the time period for which you are interested.

In the News

The **National Honey Board** has formed an Adulteration Research Program to support the development of simple, efficient and sensitive methods to detect alteration of honey. Light refraction shows the most promise because various chemical bonds in compounds (such as

beet, cane or corn syrup) vibrate differently when infrared light is passed through a sample, even amounts as little as 1% of the total volume. This technology is currently being used for orange and apple juice, olive oil, and maple syrup. Within two years, software and

data base programs will be used extensively for monitoring. If you have questions about the adulteration research project, you can call Marcia Cardetti or Julia Pirnack at the NHB office. (800) 553-7162.

Upcoming Events

Beekeeping Class

Seattle Central Community College is sponsoring a one-day intensive beekeeping course on April 6 from 8:30-5:00 at Graham Visitor Center. Cost: \$25 per student.

Contact Information:
Jeff West:
eMail: jewest@sccd.ctc.edu
Phone: (206) 587-5449

Western Apicultural Society 2002 Annual Conference

August 12—15, 2002
Tahoe Biltmore Hotel/Casino. (800) 245-8667. Use Group Number 0812 when making hotel reservation. Deadline: July 12, 2002. This conference is worth getting to. See Supplement to Sept. 2001 PSBA Newsletter for a

summary of last year's WAS 2001 Convention.

Contact Information:

Eric Mussen:
eMail: ecmussen@ucdavis.edu
Phone: (530) 752-0472

Dawn Corl:
eMail: dawncorl@blarg.net
phone: (206) 525-2433

Beetopia

Beetopia is our annual 'field day' at the Arboretum's Visitor Center. This program is intended to train new beekeepers how better to care for their hives. The program will be conducted on Saturday, May 18, 2002. Admission will be \$15 per household, or \$5 per student. We will discuss and demonstrate hive manipulation, swarm

prevention, disease prevention, disease treatment, and hive examination techniques. Former Washington State Apiarist Jim Bach will present the keynote speech, as well as perform hive examinations in the club apiary.

Contact Information:
John de Groot:
eMail: john_degroot@juno.com
Phone: (425) 788-2259



"The National Honey Board has formed an Adulteration Research Program"

PSBA OFFICERS

President

John de Groot
Phone: (425) 788-2259
eMail: john_degroot@juno.com

Vice President

Nancy Beckett
(206) 937-5583
eMail: nbeckett@gte.net

Secretary

Paula Milligan
(206) 440-0791
eMail: ryderclan@yahoo.com

Treasurer

Scott Eby
(425) 486-4290
eMail: scott.eby@physio-control.com

Newsletter Editors

Dawn Corl
Phone: (206) 525-2433
eMail: dawncorl@blarg.net

Bruce Eckholm

Phone: (206) 788-0255
eMail: eckholm@phinneybee.com

TRUSTEES

Bob Clark, Vic Scarpelli, Kate
McWiggins, Jennifer Cochrane, Gene
Bowley, Frank Fitzpatrick, Tim
Celeski, John Keenan

Tip of the Month

Don't Waste Money on Apistan According to New Research Published by Dr. Steve Sheppard:

From Dan Hendricks...

In a paper on the timing of Apistan treatment published by Jamie Strange and Steve Sheppard of WSU, researchers conclude that a single fall treatment is as effective in controlling Varroa as treating in both Spring and Fall. The full text is available at:

<http://esa.edoc.com/economic/v94n6/v94n6p1324.pdf>

Virtual Beekeeping

Georgia forbids mailing of bees more than 600 miles. The main reason cited is preventing the mess of cleaning Postal Service truck where sugar syrup has leaked out of the packages. But only in Georgia? Check out the full article:

http://www.boston.com/dailyglobe2/049/metro/honeybees_travel_ban_sours_plans_of_farmers+.shtml

The National Honey Board has created an online guide to honey suppliers in the United States:

<http://www.honeylocator.com/>

Book Watch

The Botany of Desire: A Plant's-Eye View of the World by Michael Pollan is a fascinating account of four everyday plants and their co-evolution with human society. Tracing the histories of the apple, the tulip, the potato, and cannabis, he illustrates the complex and reciprocal relationship between humans and the natural world.

Puget Sound Beekeepers Association

PSBA Newsletter Editor

c/o Dawn Corl
6226 34th Ave. NE
Seattle, WA 98115

FREE Service for PSBA Members !

Sarah Cooke will sample your bees for tracheal mites. (206) 368-5430

USED EQUIPMENT: 23 deep supers and frames, extra frames, top covers, bottom boards, beesuit, hive tools, new foundation, electric uncapping knife, electric ss extractor [3 large frames], smoker, honey and filler buckets, beebrush, queen excluders, framewire and guides, etc. Would like to sell as a unit \$1,000. Open to view and offers. This is a lot of equipment!

Call Lucas de Clercq: (360) 678-5339.

HIVES: Several 2-deep hives for sale. Medicated in Fall for mites.

Call Don Mech: (425) 432-3971

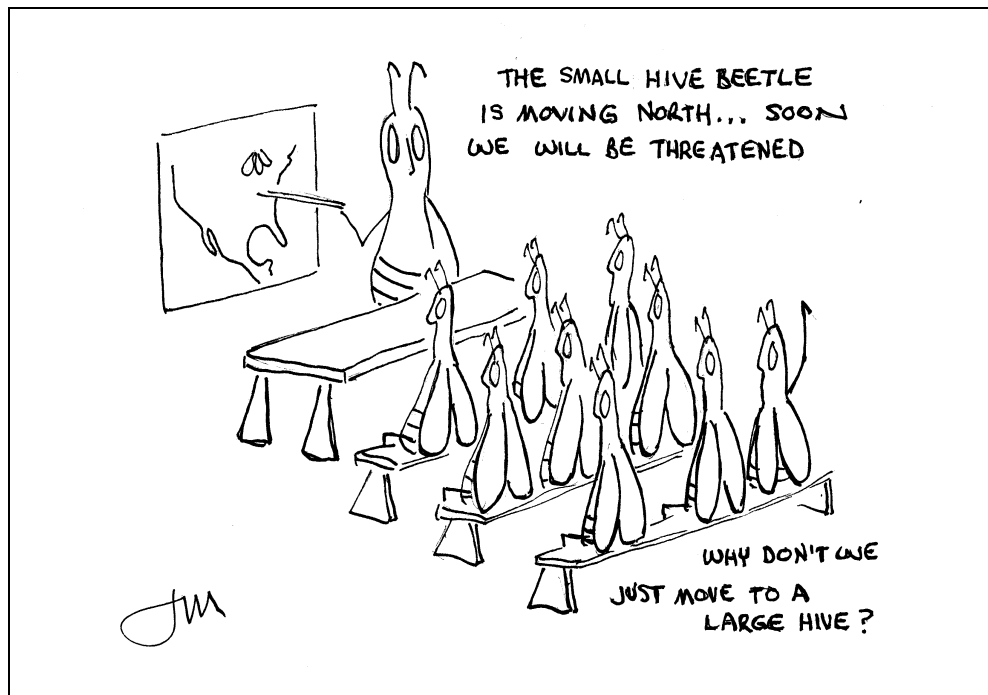
BOTTOM BOARDS: Order screened bottom boards with pull-out inserts. \$15 each.

Call Jerry: (206) 525-2433.

SLUMGUM RENDERING: Will render your slumgum for 1/2 of the resulting wax.

Call Frank: (206) 244-1291.

b
i
z
z
z
y



by Jerry Mixon

Short ads are run for free for members of PSBA! Commercial ad rates: \$15 for 1/4 page, \$30 for 1/2 page, or \$60 for a full page. Deadline for entry is first of the month.